

# **LUDLUM MODEL 271 REMOTE**

**July 2025**

**Serial No. 106787 and succeeding**

# **LUDLUM MODEL 271 REMOTE**

**July 2025**

**Serial No. 106787 and succeeding**



**LUDLUM MEASUREMENTS, INC**  
501 OAK STREET, P.O. BOX 810  
SWEETWATER, TEXAS 79556  
325-235-5494, FAX: 325-235-4672



## **STATEMENT OF WARRANTY**

Ludlum Measurements, Inc. warrants the products covered in this manual to be free of defects due to workmanship, material, and design for a period of twelve months from the date of delivery. The calibration of a product is warranted to be within its specified accuracy limits at the time of shipment. In the event of instrument failure, notify Ludlum Measurements to determine if repair, recalibration, or replacement is required.

This warranty excludes the replacement of photomultiplier tubes, G-M and proportional tubes, and scintillation crystals which are broken due to excessive physical abuse or used for purposes other than intended.

There are no warranties, express or implied, including without limitation any implied warranty of merchantability or fitness, which extend beyond the description of the face there of. If the product does not perform as warranted herein, purchaser's sole remedy shall be repair or replacement, at the option of Ludlum Measurements. In no event will Ludlum Measurements be liable for damages, lost revenue, lost wages, or any other incidental or consequential damages, arising from the purchase, use, or inability to use product.

## **RETURN OF GOODS TO MANUFACTURER**

If equipment needs to be returned to Ludlum Measurements, Inc. for repair or calibration, please send to the address below. All shipments should include documentation containing return shipping address, customer name, telephone number, description of service requested, and all other necessary information. Your cooperation will expedite the return of your equipment.

**LUDLUM MEASUREMENTS, INC.  
ATTN: SERVICE DEPARTMENT  
501 OAK STREET  
SWEETWATER, TX 79556**

**800-622-0828    325-235-5494  
FAX 325-235-4672**

TABLE OF CONTENTS

1. GENERAL .....	1
2. CABLE.....	1
3. DRAWINGS AND DIAGRAMS .....	1



## **1. GENERAL**

---

The Model 271 Remote is a remote status instrument for the Ludlum Model 375 series of area monitors. The Model 271 shows the current status of the Model 375 to which it is connected. The HIGH ALARM, SYSTEM OK, and DETECTOR FAIL lights are provided.

The Model 271 has an AUDIO ENABLE/DISABLE toggle switch, which controls the audio output.

## **2. CABLE**

---

### CABLE (#8303-433) WIRE-UP FROM MODEL 375 TO MODEL 271

#### MALE PINS--MODEL 375

9-pin D-shell connector with 5 pins

5	METER
9	+5V
2	GND
3	FAIL
7	ALARM

#### FEMALE PINS--MODEL 271

9-pin D-shell connector with 5 pins

5
9
2
3
7

## **3. DRAWINGS AND DIAGRAMS**

---

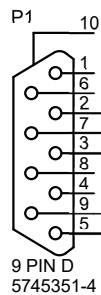
Model 271 Main Board, Drawing 238 x 36

Model 271 Main Board Component Layout, Drawing 238 x 37 (2 sheets)

Model 271 Remote Installation, Drawing 238 x 66

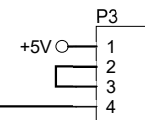
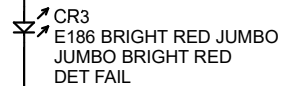
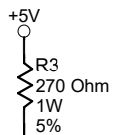
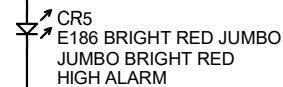
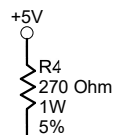
Model 271 Wall Mounting Guide, Drawing 238 x 147

(See following pages.)

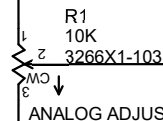
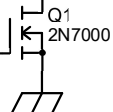
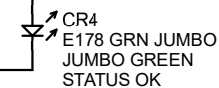
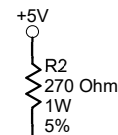


P1 requires modification  
using jackscrew 13-8151

INPUT FROM MODEL 375



640457-4  
MTA 100x4RA  
TO SONALERT AND AUDIO ENABLE SWITCH



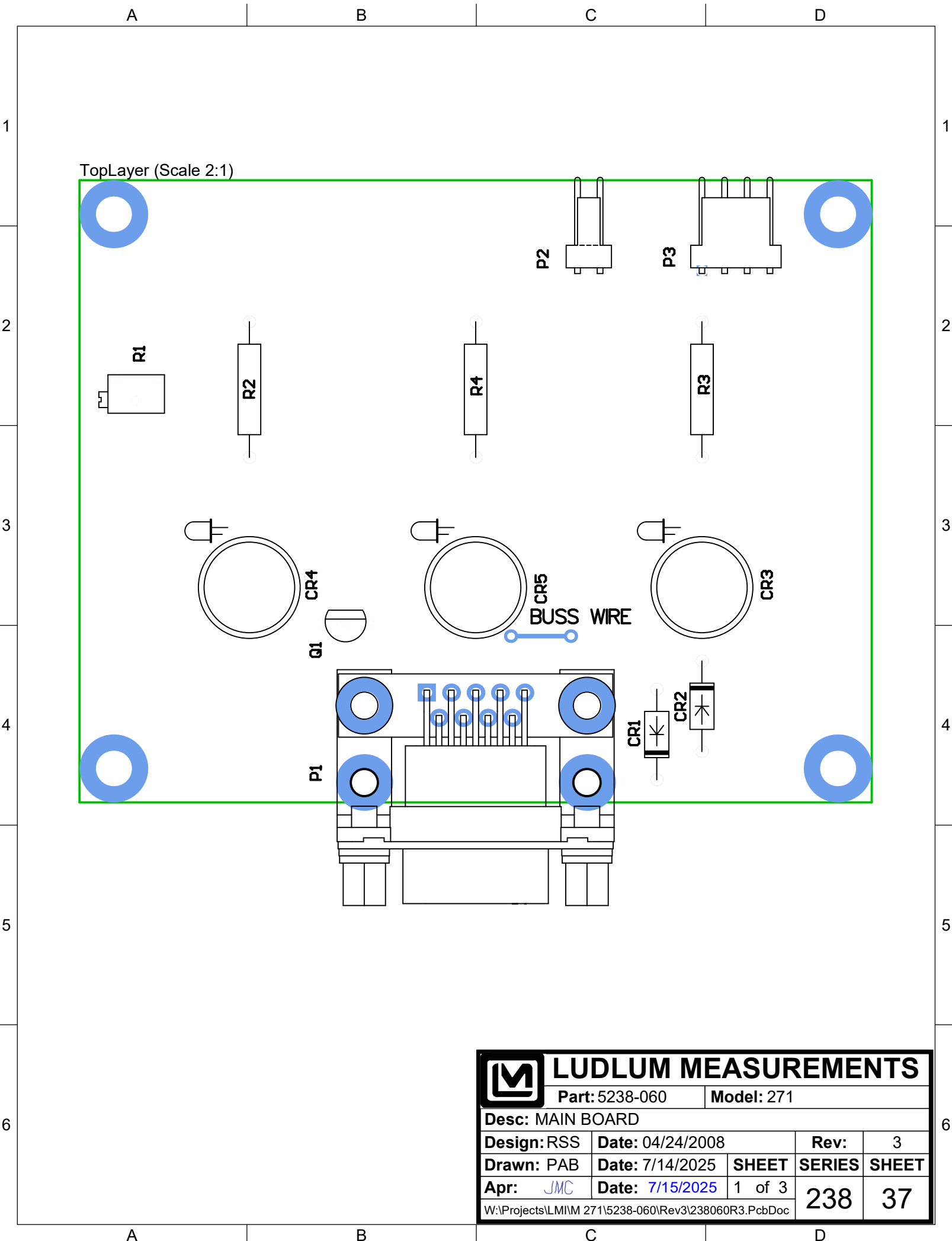
ANALOG ADJUST



640457-2  
MTA 100x2RA  
TO METER OR RCDR

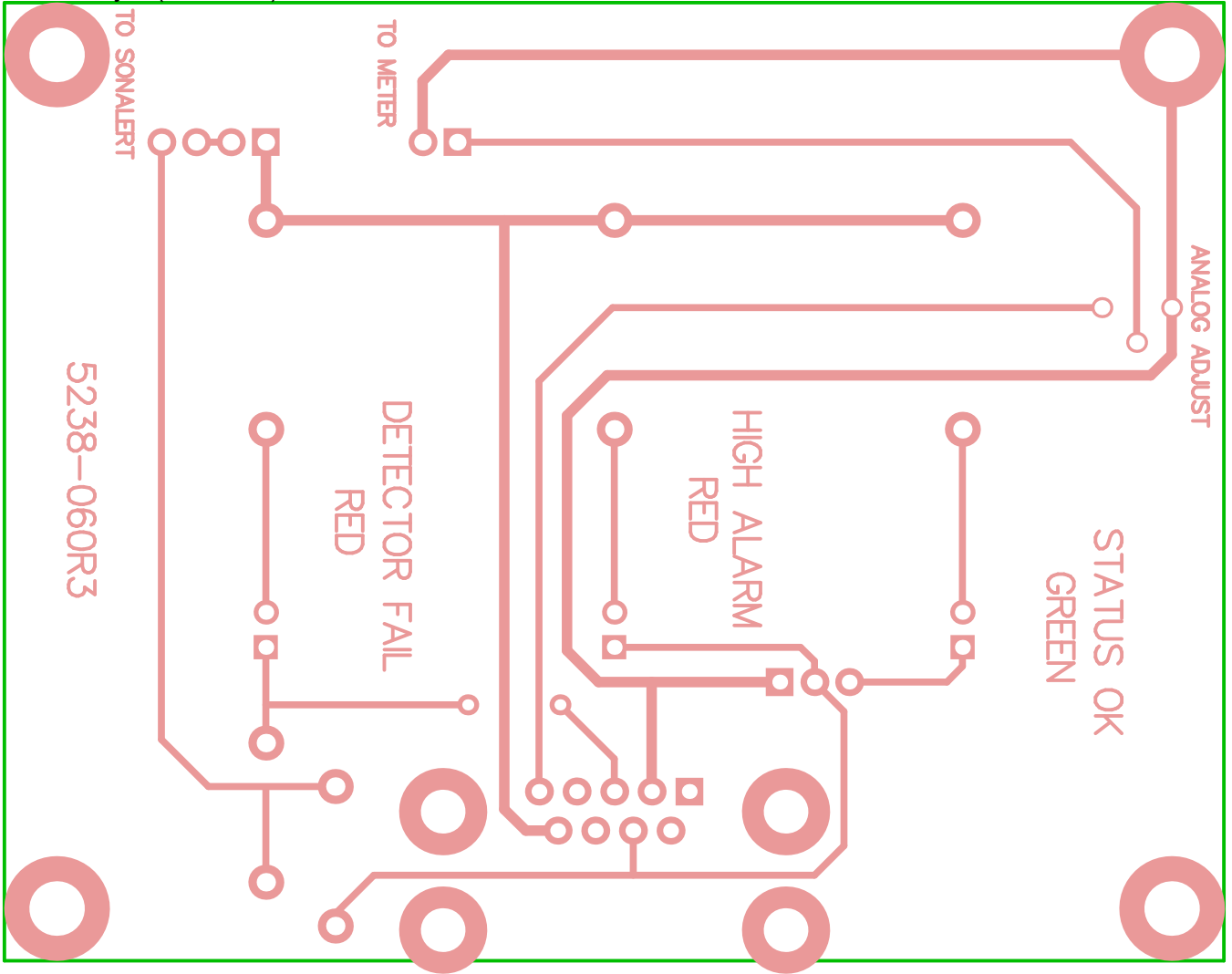
		PO Box 810 501 Oak Street Sweetwater, Texas 79556 U.S.A. 1-800-622-0828	
Drawn: PAB	7/14/2025	Title: MAIN BOARD	
Design: RSS	04/24/2008	Model: 271	
		Board#: 5238-060	
Approve: JMC	7/15/2025	Sheet: 1 of 1	Series
Print Date: 7/15/2025 8:44:30 AM	Rev: 3	238	36
W:\Projects\LMIM 271\5238-060\Rev3\238060R3P1.SchDoc			





<div><div><div></div></div><div>LUDLUM MEASUREMENTS</div></div>				
Part: 5238-060		Model: 271		
Desc: MAIN BOARD				
Design: RSS	Date: 04/24/2008		Rev:	3
Drawn: PAB	Date: 7/14/2025	SHEET	SERIES	SHEET
Apr: JMC	Date: 7/15/2025	1 of 3	238	37
W:\Projects\LM\I\M 271\5238-060\Rev3\238060R3.PcbDoc				

BottomLayer (Scale 2:1)



**LUDLUM MEASUREMENTS**

Part: 5238-060

Model: 271

Desc: MAIN BOARD

Design: RSS Date: 04/24/2008

Rev: 3

Drawn: PAB

Date: 7/14/2025

SHEET

SERIES SHEET

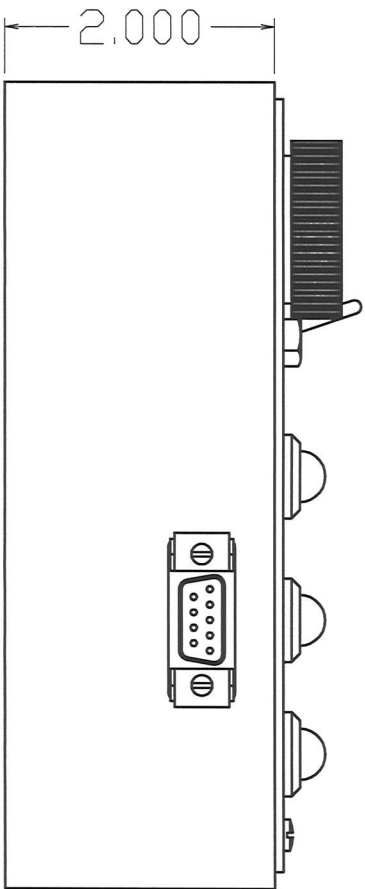
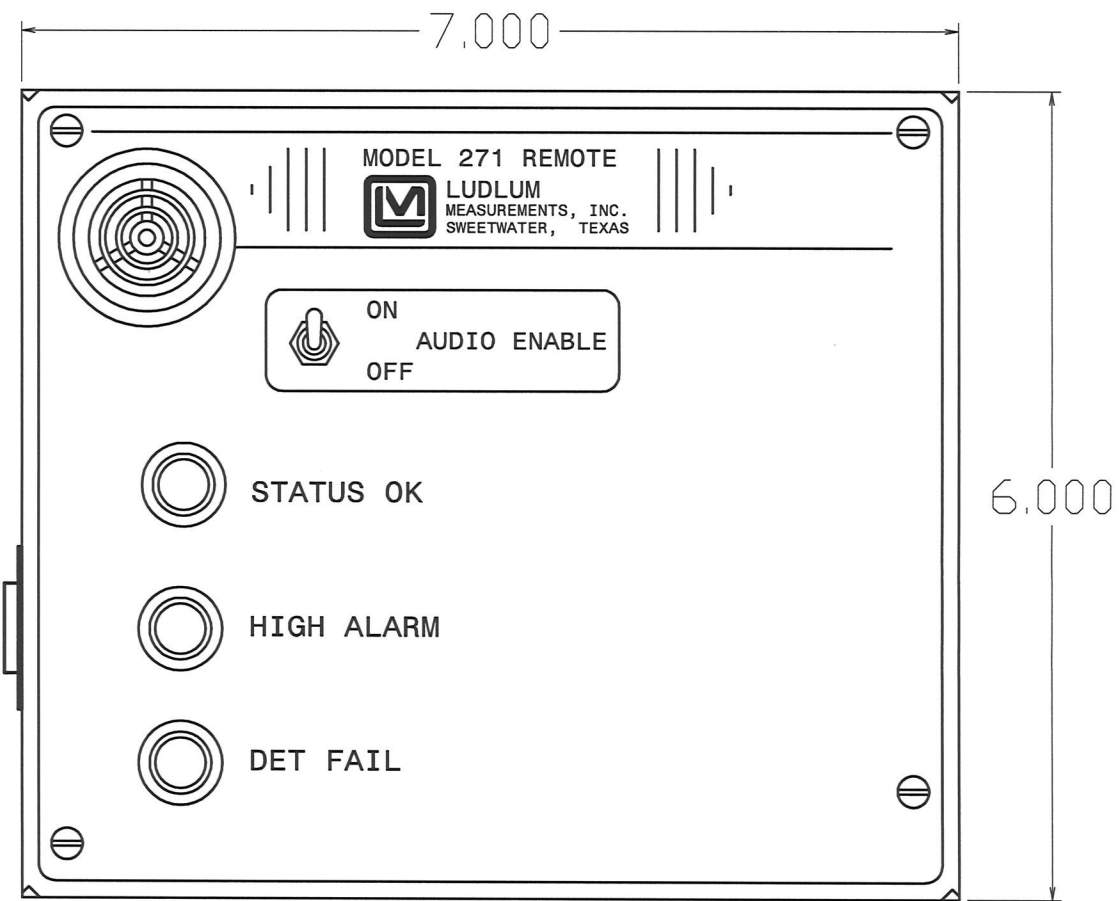
2 of 3

238

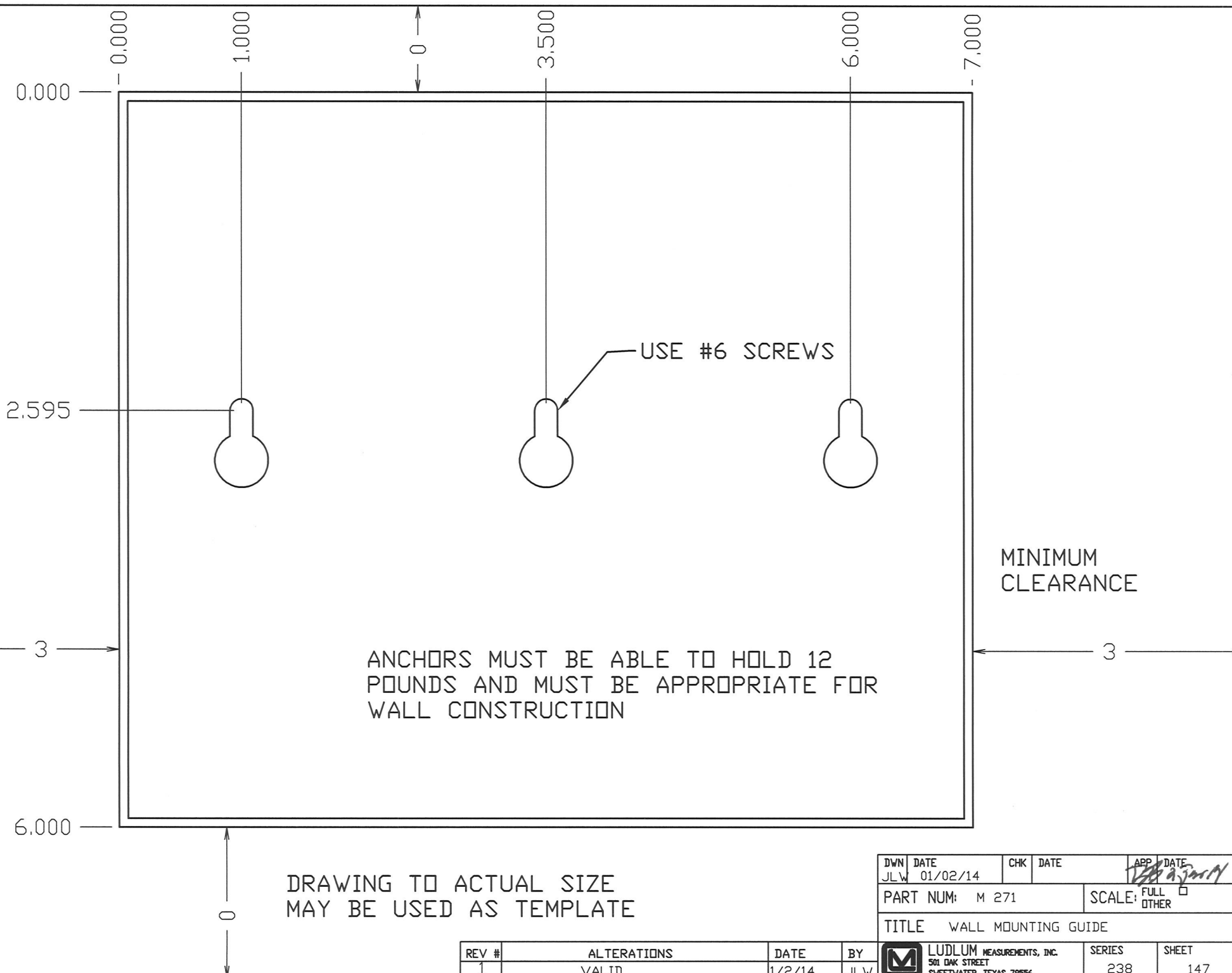
37


W:\Projects\LM\IM 271\5238-060\Rev3\238060R3.PcbDoc

REV #	ALTERATIONS	DATE	BY



DIVN	DATE	CHECKED	APPROVED
DDW	1-8-99	<i>H. J. Johnson</i>	<i>160 9-18-12</i>
TITLE: M 271 REMOTE INSTALLATION			
LUDLUM MEASUREMENTS, INC. 501 OAK STREET SWEETWATER, TEXAS 79556		SERIES 238	SHEET 66



DWN	DATE	CHK	DATE	APP	DATE
JLW	01/02/14			<i>[Signature]</i>	
PART NUM: M 271			SCALE: <input checked="" type="checkbox"/> FULL <input type="checkbox"/> OTHER		
TITLE WALL MOUNTING GUIDE					
REV #	ALTERATIONS	DATE	BY	 LUDLUM MEASUREMENTS, INC. 501 OAK STREET SWEETWATER, TEXAS 79556	
1	VALID	1/2/14	JLW	SERIES 238	SHEET 147