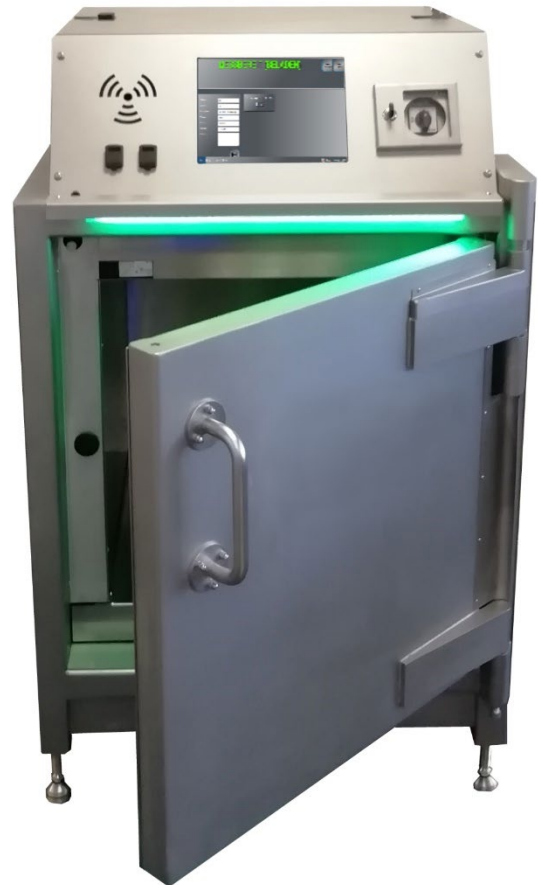


## Model HWM-180

Free Release Monitor for Reliable Contamination Detection of Gamma Emitting Radionuclides on Small Items up to 100 kg (220 lb)

The Model HWM-180 is designed for the measurement and release of parts and materials from controlled areas. Utilizing two doors with an interlock system, this instrument is ideal as an automated release measuring system.

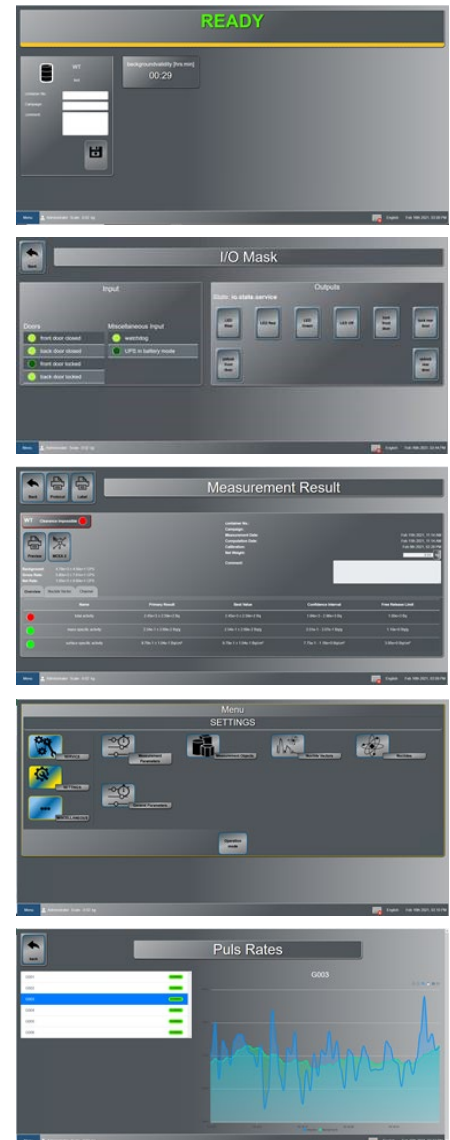
- 6 gamma plastic detectors for complete  $4\pi$  coverage
- 25 mm (1 in.) lead shielding
- Built-in weigh scale for up to 100 kg (220 lb)
- Two door interlock system with the option to use one door only
- Unique stainless steel detector housing design to reduce radiation streaming effects
- Integrated 7 in. touch-screen display
- Automated measuring process with user guidance
- Radionuclide composition suggestions from detector pulse analysis
- Network capability for remote monitoring and supervision



### Key Features

- Housing with Pass-Through Design and Optimized for Reduction of Radiation Streaming
- Reduced Dead Zones: > 70% Coverage (Inner Chamber to Detector Size)
- Intuitive Operating Software That Is Easy to Use
- Export of Measurement/Parameter Data in XML Format via USB
- Energy Filter Settings to Optimize Discrimination of Background Radiation from Licensed Materials
- Integrated Mini-UPS for Measurements During Mains Power Outage
- Ergonomically Positioned Touch Operated Display
- Access to Historical Measurement Data via Integrated Database
- Access to Ludlum GmbH Test Tool Software for Detector Analysis

<b>Standards:</b>	The monitor is compliant with the following standards: CE, CSA / UL or EMC, ISO11929
<b>Detectors:</b>	6x gamma plastic detectors Detector volume: > 71.64 L (2.5 ft <sup>3</sup> ) Direct connection of each detector to the PC via USB
<b>User Software:</b>	Intuitive operator software with touch-screen display, Fully automated measurement process with user guidance, indications of results and measurement material position on the display.  Web based for remote access.
<b>Electronics:</b>	Integrated illumination in the chamber, status-LED, interlock-relays with interface to external units
<b>Housing:</b>	Stainless steel
<b>Sensors</b>	2 door sensors with interlock Integrated weigh scale
<b>Ext. Dimensions:</b>	1,346 x 844 x 991 mm (53 x 33.2 x 39 in.) (H x W x D) incl. handles
<b>Chamber Volume:</b>	600 x 550 x 550 mm (23.6 x 21.7 x 21.7 in.) (H x W x D), 181 L (6.4 ft <sup>3</sup> )
<b>Shielding:</b>	Standard: 25 mm (1 in.) lead Option: 50 mm (2 in.) lead
<b>Weight:</b>	Standard: approx. 1,900 kg (4,190 lb) With 50 mm lead: 2,500 kg (5,510 lb)
<b>Power Supply:</b>	External power adapter input: 100 – 240 V, 1.6A max / 24 V, 5 A output



Software Screenshots

## Additional Options

Ludlum GmbH offers a range of additional options to enhance the capabilities of the monitor and are able to customize the instrument to your specific needs.

- Second additional display on the exit side
- Additional lead shielding (50 mm [2 in.] instead of 25 mm [1 in.])
- Integration of a camera in the chamber
- 4 (instead of 6) gamma plastic detectors



DMa-SKn; 25.03.2021; HWM-180\_en